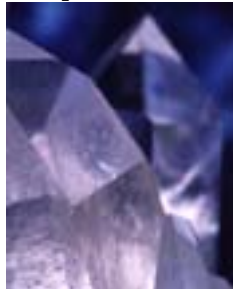


Crystal Software

Connecting ResumePipe to Lotus Notes

Application Integration

Prepared By



Crystal Software

<i>Last Update</i>	:	30-Sep-2002
<i>Print Date</i>	:	23-Oct-2002
<i>Revision</i>	:	1.1
<i>Status</i>	:	Final
<i>Document</i>	:	lotus_notes.doc

Public domain

Table of Contents

1	INTRODUCTION.....	1
2	CONFIGURING NOTES FOR RESUMEPIPE MAPI ACCESS	1
2.1	PREREQUISITES AND INSTALLATION ORDER	1
2.2	STEP 1. OPEN CONTROL PANEL.....	1
2.3	STEP 2. SHOW MAIL PROFILES	2
2.4	STEP 3. ADD A NEW MAIL PROFILE	2
2.5	STEP 4. CONFIGURE NEW MAIL PROFILE	3
2.6	STEP 5. NAME THE NEW PROFILE.....	3
2.7	STEP 6. ENTER MAIL PROFILE PASSWORD.....	4
2.8	STEP 7. CONFIRMATION SCREEN 1.....	4
2.9	STEP 8. CONFIRMATION SCREEN 2.....	5
2.10	STEP 9. SET THE NEW PROFILE AS THE DEFAULT	5
2.11	STEP 10. RE-OPEN RESUMEPIPE.....	6
3	CONTACT INFORMATION	6

1 Introduction

This document describes how to connect ResumePipe to Lotus Notes using MAPI support.

Please note that Microsoft deliberately makes it hard to connect to Lotus Notes! Please ensure you read the section **2.1 Prerequisites and installation order**.

Please PRINT OUT these instructions before attempting to follow them.

2 Configuring Notes for ResumePipe MAPI access

2.1 Prerequisites and installation order

The installation order outlined below **MUST** be followed:

1. Full install of MicroSoft Office (this provides the “Mail and Fax” icon in Control Panel)
2. FOLLOWED BY Full install of Lotus Notes

The reason this order must be followed is that Lotus Notes will not install its MAPI support UNLESS it detects the corresponding Windows MAPI components. If you do not perform the steps in this order you won't find the option 'Lotus Notes Mail' at step 4.

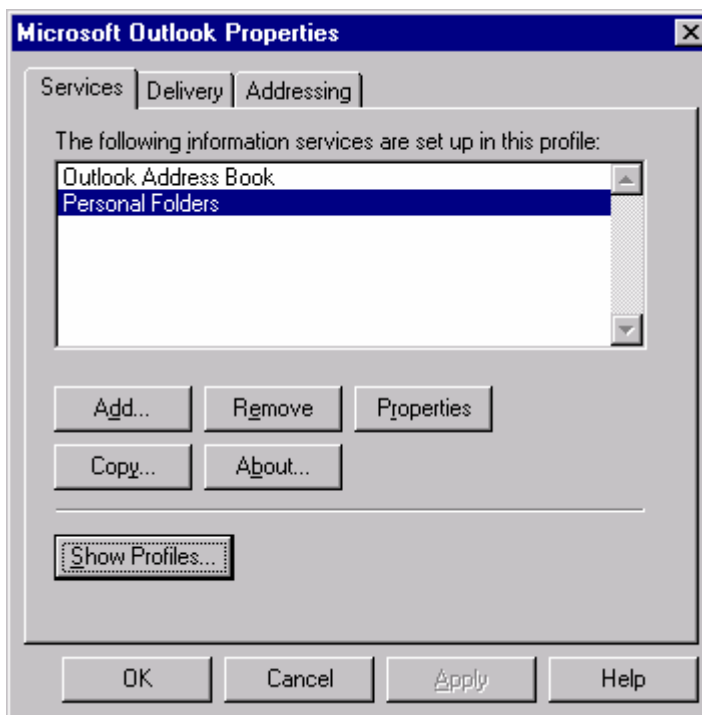
2.2 Step 1. Open Control Panel

Open Windows Control Panel, and click on “Mail and Fax”



2.3 Step 2. Show mail profiles

After clicking “Mail and Fax”, Windows displays the properties of the default mail profile. We need to add a new mail profile, so click on “Show Profiles”



2.4 Step 3. Add a new mail profile

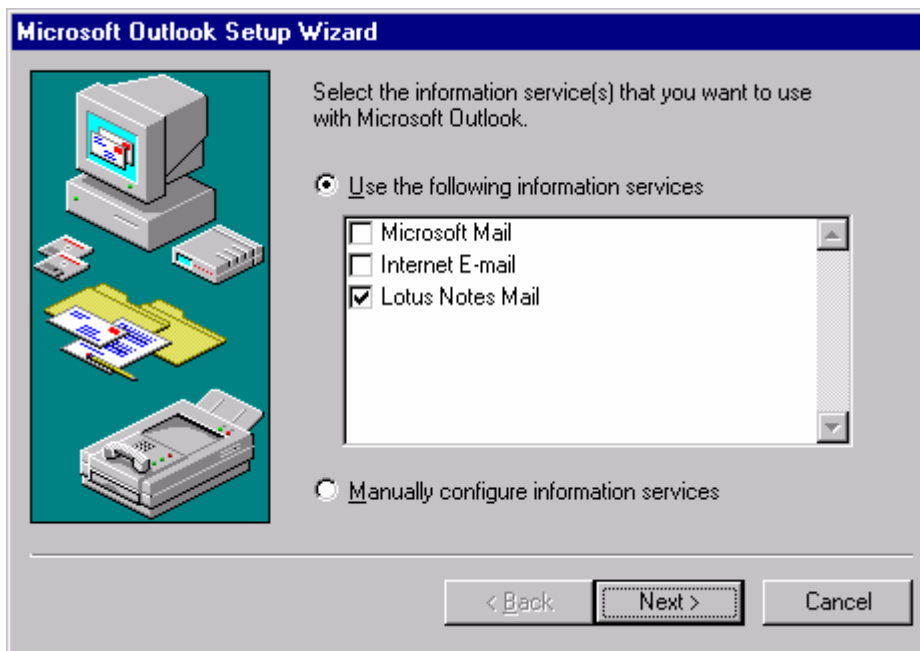
Click the ‘Add’ button to add a new mail profile.



2.5 Step 4. Configure new mail profile

Make sure that ONLY Lotus Notes Mail is checked, then click 'Next'.

If Lotus Notes Mail does NOT appear, please read section **2.1 Prerequisites and installation order**.



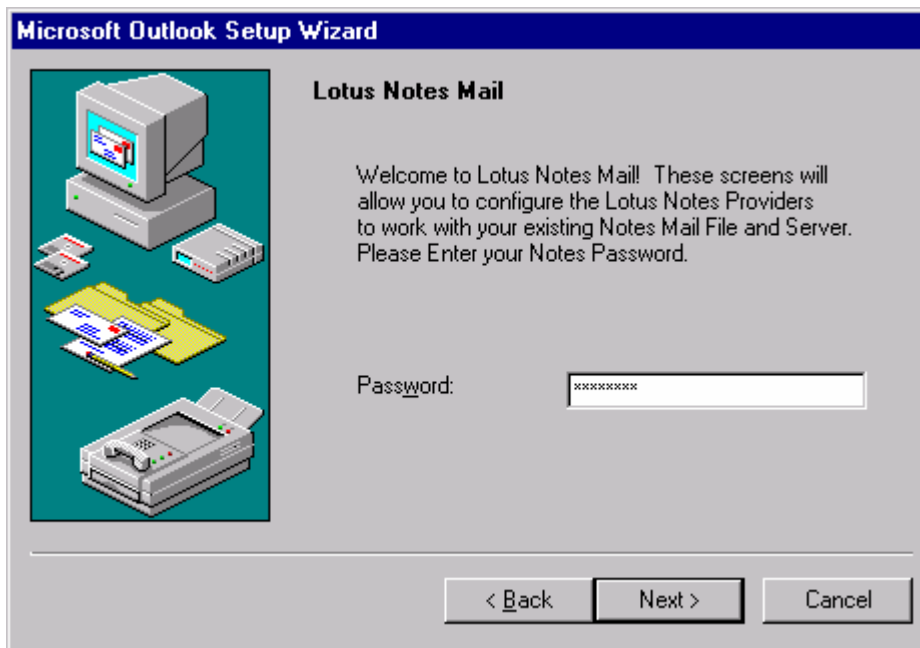
2.6 Step 5. Name the new profile

Type the name 'Notes' or give the profile a meaningful name, then click 'Next'.



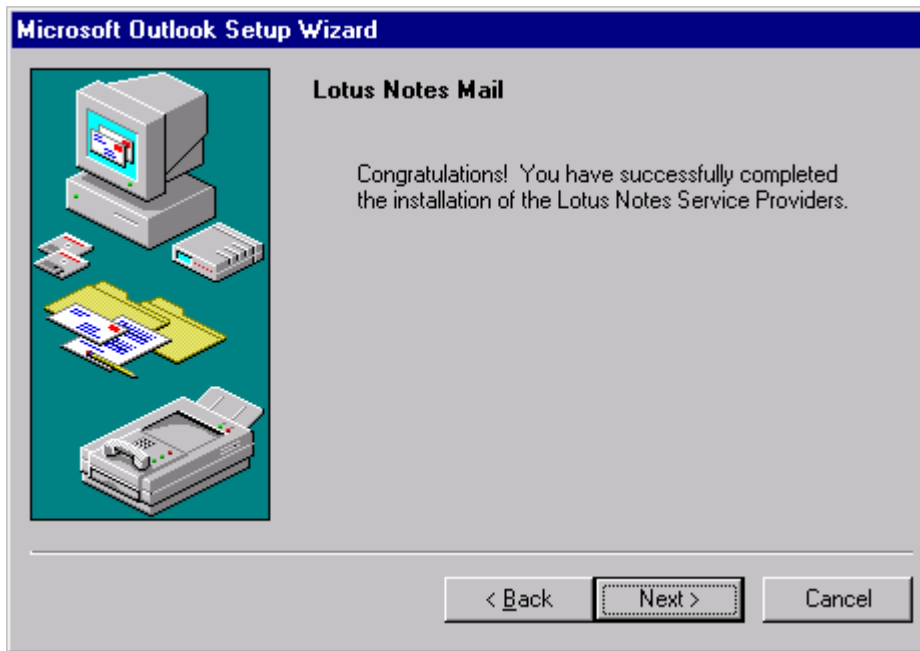
2.7 Step 6. Enter mail profile password

Enter your CURRENT Lotus Notes password, then click 'Next'.



2.8 Step 7. Confirmation screen 1.

Click 'Next'.



2.9 Step 8. Confirmation screen 2.

Click 'Finish'.



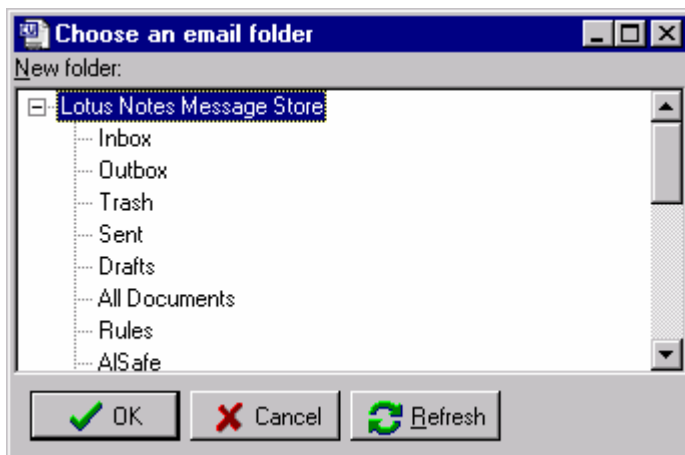
2.10 Step 9. Set the new profile as the default

Under the label 'When starting Microsoft Windows Messaging, use this', choose your new mail profile, then click 'Close'.



2.11 Step 10. Re-open ResumePipe

When you re-open ResumePipe, displaying the folder list will now show you the contents of your Notes folders. Please note that this screen may take a long time to display/refresh.



3 Contact information

Email: sales@crystalsoftware.com.au

WWW: <http://www.crystalsoftware.com.au>

Fax: (+61) 3 8610-1234

Voice: (+61) 3 9888-3104

Mail: Simon Carter
Crystal Software
2 / 9 Woodbine Court
Wantirna
Victoria 3152
AUSTRALIA.