



ResumePipe Pro

Why Waste Time Manually Processing Resumes?

On Monday you advertised for a new position. It's now Wednesday, and you have 50,000 e-mails sitting in your Inbox! Use ResumePipe to eliminate this nightmare in minutes!

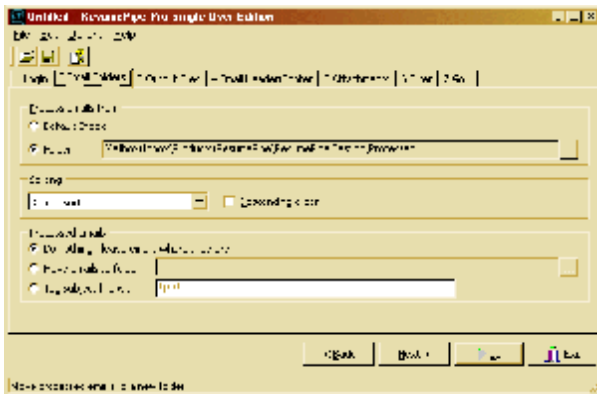
Give your Human Resources professionals 3-7 hours back PER DAY by automatically extracting e-mails and attachments ready for import into your Applicant Tracking System (ATS) or database. Start saving time, increasing efficiency and lowering your costs - while keeping accuracy at 100%.

ResumePipe Pro has a sophisticated text processing engine that reformats the resume to your corporate standard, cleans up any special characters and white space that appear as junk characters or misaligned text, AND feeds resumes directly into your Applicant Tracking System or database.

Intelligent Processing

ResumePipe connects to your e-mail client program, grabs each e-mail and its attachments and combines and saves them to a single file. These files can be easily imported into resume packages such as Restrac or imported into a database.

Once ResumePipe has been activated you can go and have a coffee break – no intervention is required by you.



Control where e-mails come from and what is done with them after processing, such as moving them to a new folder.

Process E-mails from Anywhere

ResumePipe connects to any industry standard MAPI-compliant e-mail software:

- Microsoft Outlook (with or without Microsoft Exchange Server 5.5, 2000 etc)
- Lotus Notes, Netscape, Applix Application Suite and other MAPI-compliant e-mail software (see our white paper online).

Virus Scanning

Any installed virus scanning continues to occur on all opened e-mails and documents - so your corporate infrastructure remains secure.

Attachment Handling

ResumePipe automatically extracts data from Word documents, text files, web pages, Rich Text Files (RTF) and other common document formats. It also processes attachments inside forwarded e-mails.

Based on their type, attachments can be opened, ignored, printed, saved or flagged for manual handling. Attachment processing can be customized for new attachment types and can also be disabled.



Control precisely how each attachment type is handled.

User Benefits

- Retrieve e-mails from any folder
- Move processed e-mails to a new folder for archiving, to the Deleted Items folder or simply leave them in place
- Each e-mail and its attachments are saved to sequentially numbered files, which are easy to import into resume packages such as Restrac
- Control where output files are written, what they are called and how they are numbered
- Place user defined header and footer text around each e-mail and around each attachment, including e-mail header information like From, To, Subject, Sent etc
- Post-process files using our text engine

- Automate ResumePipe to run at predetermined times using a scheduler. This makes it easy to set up batches of resumes for processing
- Handle unlimited e-mails and attachments
- Process e-mails in various sort orders to suit ATS import requirements.

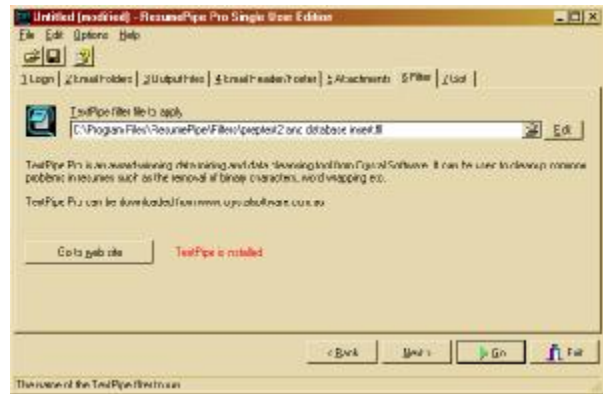
Powerful Filtering and Extraction

Included in the ResumePipe software is TextPipe Pro, a sophisticated but easy to use text processing application that can be used to:

- Remove garbage characters that commonly appear in e-mails
- Remove unwanted white space
- Remove multiple blank lines
- Reformat text and word wrap it for easy viewing
- Fix formatting and common punctuation mistakes
- Insert processed Resumes into your Applicant database
- Insert processed Resumes into an MS Word document, for example, your corporate Resume format
- Write custom code in industry-standard VBScript or JScript to augment ResumePipe's inbuilt manipulation filters
- And much more.

...so after several tests I became a believer. This wonderful application not only processes every attachment and message, but can also recognize those files that are resumes and process them in any set of predefined formats. It can also filter and automatically strip out any extraneous header or footer data and give you that perfect scannable resume.

Bret Hollander
Net Recruiter



Specify a TextPipe Pro filter to cleanse the resume e-mail and attachments

Some of Our Clients

ResumePipe is used by TMP.WorldWide, Johnson & Johnson, BEKS Data Services, Houston ISD, Microvision Inc, the National Drug Intelligence Centre and many other large organizations.

Pro and Lite Editions

ResumePipe comes in two editions - a Pro edition that includes TextPipe Pro, and a Lite edition that does not include or integrate with TextPipe Pro.

ResumePipe runs on Windows 95, 98, ME, NT, 2000 and XP and requires Microsoft Word 97, 98, 2000 or XP and a MAPI-compliant e-mail system.

Try ResumePipe FREE Today!

Download a FREE 30 day trial from the DataMystic web site,

www.DataMystic.com